

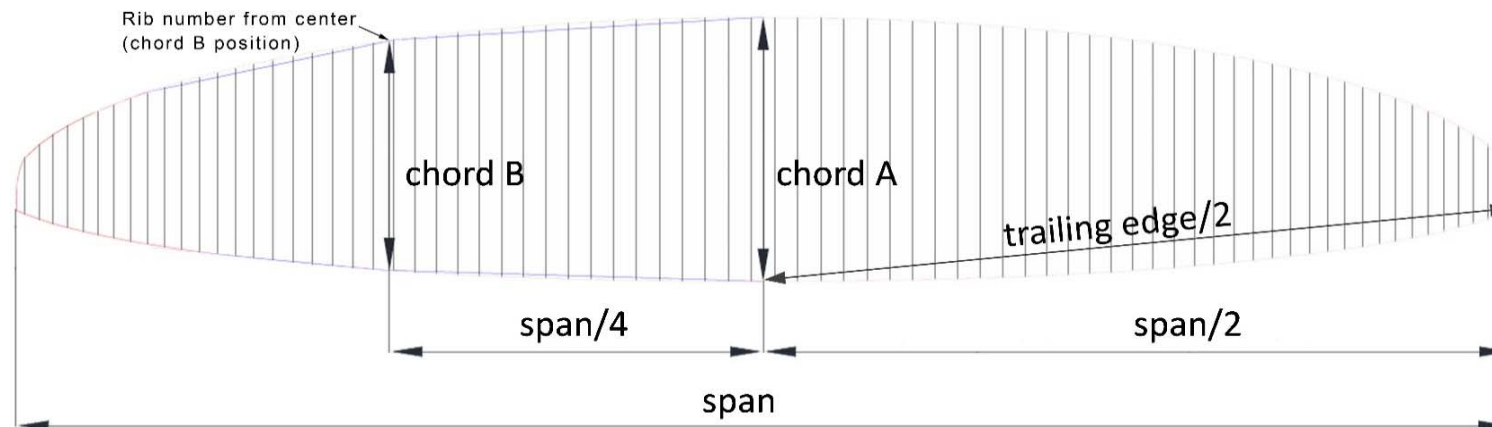
Measurement Report Template

CIVL CCC 2020 (Version 1.1)

| | | | | | |
|-------|------------------|----------|----------------|---------------------------|------------|
| Brand | Gin Gliders Inc. | Size | L | Test laboratory Cert. # | n/a |
| Model | Boomerang 13 | Serial # | BN02-Q1080313P | Certification date | 20.03.2024 |

Canopy dimensions

| Position | Rib # from center | Distance [mm] | Tension [daN] | Manual tolerances | Aspect ratio $4 \cdot \text{span} / (\text{chord A} + 2.5 \cdot \text{Chord B})$ | Number cells | Scale factor |
|-------------------|-------------------|---------------|---------------|-------------------|---|--------------|--------------|
| Full Span | | 13897 | 5 | +/-2% | 7,52 | 111 | 1,12 |
| 1/2 Trailing Edge | | 7072 | 5 | +/-1% | | | |
| Chord A | | 2227 | 1 | +/-1% | | | |
| Chord B | 25 | 2067 | 1 | +/-1% | | | |



Chord lenght, inlet position, tabs position measured from trailing edge.

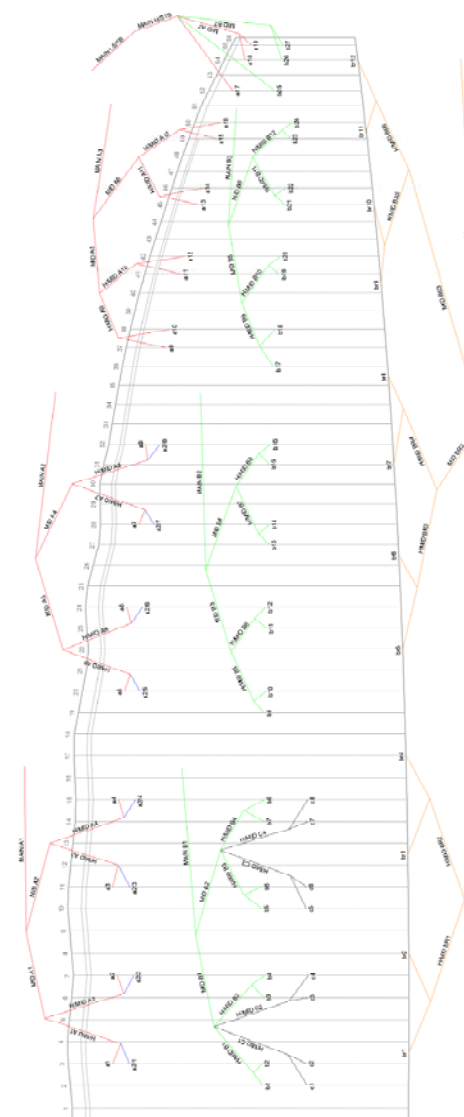
(The tab A & B & C can be on different rib, take care to specify it)

| On first lined rib (from center) | Rib n° from center | Distance [mm] | Tension [daN] | Manual tolerances |
|-------------------------------------|-----------------------|------------------|------------------|----------------------|
| Chord | 2 | 2243 | 1 | +/-1% |
| Top of inlet | 2 | 2159 | 1 | +/-1% |
| Bottom of inlet | 2 | 2126 | 1 | +/-1% |
| Tab Aa* | 3 | 1962 | 1 | +/-10mm |
| Tab Ab* | 3 | 1847 | 1 | +/-10mm |
| Tab B* | 2 | 975 | 1 | +/-10mm |
| Tab C* | 2 | 684 | 1 | +/-10mm |

| On last lined rib of Group 2 (from center) | Rib n° from center | Distance [mm] | Tension [daN] | Manual tolerances |
|---|-----------------------|------------------|------------------|----------------------|
| Chord | 32 | 1856 | 1 | +/-1% |
| Top of inlet | 32 | 1782 | 1 | +/-1% |
| Bottom of inlet | 32 | 1763 | 1 | +/-1% |
| Tab Aa* | 32 | 1620 | 1 | +/-10mm |
| Tab Ab* | 32 | 1529 | 1 | +/-10mm |
| Tab B* | 32 | 810 | 1 | +/-10mm |

| On last lined rib (stabilo, from center) | Rib n° from center | Distance [mm] | Tension [daN] | Manual tolerances |
|---|-----------------------|------------------|------------------|----------------------|
| Chord | 55 | 518 | 1 | +/-1% |
| Tab A* | 55 | 440 | 1 | +/-10mm |
| Tab B* | 55 | 310 | 1 | +/-10mm |

*Bridle (tab) position measurement:
end of trailing edge to center bridle (tab)





Measurement Report Template

CIVL CCC 2020 (Version 1.0)

ABSOLUTE LINE LENGHT

Absolute line length from bottom riser to canopy in mm with 5daN of tension (Manual tolerances +/-10mm)
For scaled sizes: lines are within +/-20mm of the initial size x scale factor

| Number | A1 | | | A2 | | | B | | |
|--------|--------|--------|-------|--------|--------|-------|--------|--------|-------|
| | Glider | Manual | Delta | Glider | Manual | Delta | Glider | Manual | Delta |
| 27 | | | | | | | | 7738 | |
| 26 | | | | | | | | 7699 | |
| 25 | | | | | | | | 7734 | |
| 24 | | | | | | | | 7928 | |
| 23 | | | | | | | | 7916 | |
| 22 | | | | | | | | 7936 | |
| 21 | | | | | | | | 7958 | |
| 20 | | | | | | | | 8033 | |
| 19 | | 7718 | | | | | | 8049 | |
| 18 | | 7685 | | | | | | 8152 | |
| 17 | | 7771 | | | | | | 8249 | |
| 16 | | 7918 | | | | | | 8392 | |
| 15 | | 7895 | | | | | | 8373 | |
| 14 | | 7916 | | | | | | 8375 | |
| 13 | | 7940 | | | | | | 8395 | |
| 12 | | 8024 | | | | | | 8453 | |
| 11 | | 8044 | | | | | | 8467 | |
| 10 | | 8162 | | | | | | 8575 | |
| 9 | | 8212 | | | | | | 8628 | |
| 8 | | 8389 | | | 8371 | | | 8709 | |
| 7 | | 8393 | | | 8375 | | | 8680 | |
| 6 | | 8473 | | | 8451 | | | 8652 | |
| 5 | | 8617 | | | 8595 | | | 8670 | |
| 4 | | 8712 | | | 8691 | | | 8708 | |
| 3 | | 8686 | | | 8658 | | | 8715 | |
| 2 | | 8727 | | | 8703 | | | 8811 | |
| 1 | | 8845 | | | 8820 | | | 8868 | |
| 1 | | 8845 | | | 8820 | | | 8868 | |
| 2 | | 8727 | | | 8703 | | | 8811 | |
| 3 | | 8686 | | | 8658 | | | 8715 | |
| 4 | | 8712 | | | 8691 | | | 8708 | |
| 5 | | 8617 | | | 8595 | | | 8670 | |
| 6 | | 8473 | | | 8451 | | | 8652 | |
| 7 | | 8393 | | | 8375 | | | 8680 | |
| 8 | | 8389 | | | 8371 | | | 8709 | |
| 9 | | 8212 | | | | | | 8628 | |
| 10 | | 8162 | | | | | | 8575 | |
| 11 | | 8044 | | | | | | 8467 | |
| 12 | | 8024 | | | | | | 8453 | |
| 13 | | 7940 | | | | | | 8395 | |
| 14 | | 7916 | | | | | | 8375 | |
| 15 | | 7895 | | | | | | 8373 | |
| 16 | | 7918 | | | | | | 8392 | |
| 17 | | 7771 | | | | | | 8249 | |
| 18 | | 7685 | | | | | | 8152 | |
| 19 | | 7718 | | | | | | 8049 | |
| 20 | | | | | | | | 8033 | |
| 21 | | | | | | | | 7958 | |
| 22 | | | | | | | | 7936 | |
| 23 | | | | | | | | 7916 | |
| 24 | | | | | | | | 7928 | |
| 25 | | | | | | | | 7734 | |
| 26 | | | | | | | | 7699 | |
| 27 | | | | | | | | 7738 | |

| Number | C | | |
|--------|--------|--------|-------|
| | Glider | Manual | Delta |
| 4 | | 8791 | |
| 3 | | 8796 | |
| 2 | | 8887 | |
| 1 | | 8943 | |
| 1 | | 8943 | |
| 2 | | 8887 | |
| 3 | | 8796 | |
| 4 | | 8791 | |

| Number | C | | |
|--------|--------|--------|-------|
| | Glider | Manual | Delta |
| 8 | | 8785 | |
| 7 | | 8761 | |
| 6 | | 8730 | |
| 5 | | 8748 | |
| 5 | | 8748 | |
| 6 | | 8730 | |
| 7 | | 8761 | |
| 8 | | 8785 | |

Measurement Report Template

CIVL CCC 2020 (Version 1.0)

Riser length

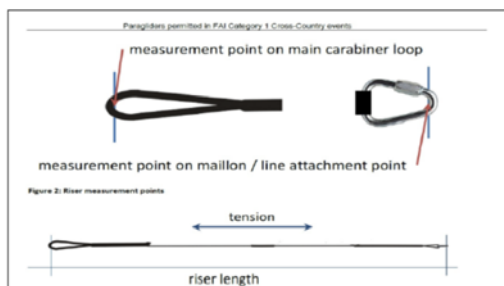
From bottom riser to top maillon on each branche in mm with 5daN (Manual tolerances +/-5mm)

| Trimm speed setting | A | A' | Stabi | B | Δt (= A1-B) | Attachment rod \varnothing [mm] |
|---------------------|-----|-----|-------|-----|------------------------|-----------------------------------|
| Manual | 520 | 485 | 505 | 520 | 0 | 10 |
| Glider | | | | | 0 | |

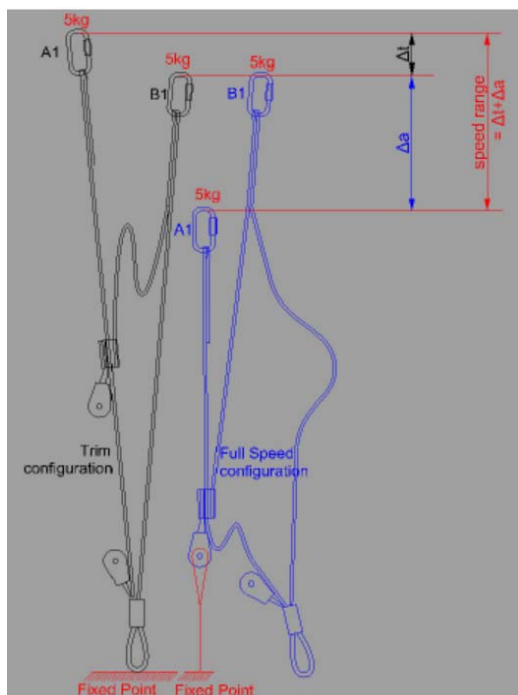
| Full speed setting | Δa (=B-A) | B-A' | Total speed range ($\Delta t + \Delta a$) |
|--------------------|-------------------|------|--|
| Manual | 142 | 125 | 142 |
| Glider | | | 0 |

| High speed setting | Δa (=B-A1) | Total high speed range > 100 |
|--------------------|--------------------|------------------------------|
| CCC | 100 | 100 |
| Glider | | 0 |

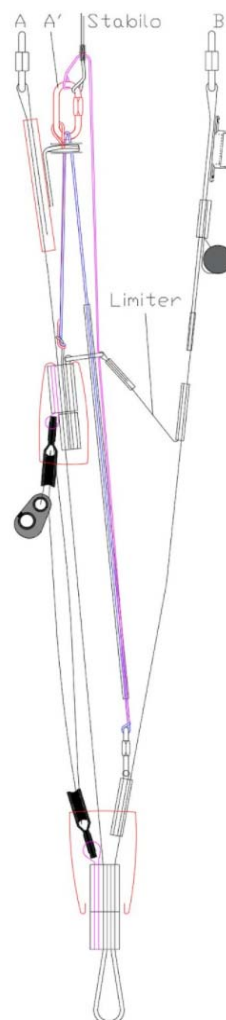
Riser measurment points



Riser measurment lengths



Riser drawing (manufacturer)





CIVL CCC 2020 (Version 1.0)

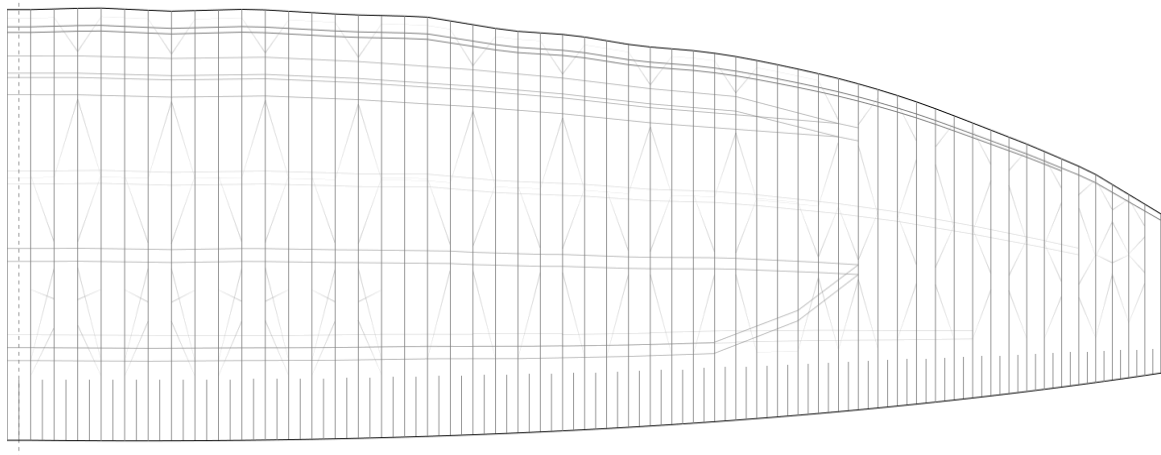
| Table of line materials | | | | | | | | | | |
|-------------------------|---------|----------|---------|----------|----------|----------|----------|-------------|----------|----------|
| Upper | | | | | | | | | | |
| | A1 | | A2 | | B | | C | | BR | |
| 1 | Edlerid | 8001-090 | Edlerid | 8001-090 | Edlerid | 8001-050 | Edlerid | 8001-025 | Edlerid | 8001-025 |
| 2 | Edlerid | 8001-070 | Edlerid | 8001-050 | Edlerid | | Edlerid | | Edlerid | |
| 3 | Edlerid | 8001-070 | Edlerid | | Edlerid | | Edlerid | | Edlerid | |
| 4 | Edlerid | 8001-070 | Edlerid | | Edlerid | | Edlerid | | Edlerid | |
| 5 | Edlerid | 8001-090 | Edlerid | | Edlerid | | Edlerid | | Edlerid | |
| 6 | Edlerid | 8001-070 | Edlerid | | Edlerid | | Edlerid | | Edlerid | |
| 7 | Edlerid | 8001-070 | Edlerid | | Edlerid | | Edlerid | | Edlerid | |
| 8 | Edlerid | 8001-070 | Edlerid | | Edlerid | | Edlerid | | Edlerid | |
| 9 | Edlerid | 8001-050 | | Edlerid | 8001-050 | | Edlerid | | | |
| 10 | Edlerid | | | Edlerid | | | Edlerid | | | |
| 11 | Edlerid | | | Edlerid | | | Edlerid | | | |
| 12 | Edlerid | | | Edlerid | | | Edlerid | | | |
| 13 | Edlerid | | | Edlerid | | | Edlerid | | | |
| 14 | Edlerid | | | Edlerid | | | Edlerid | | | |
| 15 | Edlerid | | | Edlerid | | | Edlerid | | | |
| 16 | Edlerid | | | Edlerid | | | Edlerid | | | |
| 17 | Edlerid | 8000-025 | | Edlerid | 8000-025 | | Edlerid | | | |
| 18 | Edlerid | | | Edlerid | | | Edlerid | | | |
| 19 | Edlerid | | | Edlerid | | | Edlerid | | | |
| 20 | | | | Edlerid | | | | | | |
| 21 | | | | Edlerid | | | Edlerid | | | |
| 22 | | | | Edlerid | | | Edlerid | | | |
| 23 | | | | Edlerid | | | Edlerid | | | |
| 24 | | | | Edlerid | | | Edlerid | | | |
| 25 | | | | Edlerid | | | Edlerid | | | |
| 26 | | | | Edlerid | | | Edlerid | | | |
| 27 | | | | Edlerid | | | Edlerid | | | |
| H/middle | | | | | | | | | | |
| | A | | | B | | | | BR H/Middle | | |
| 1 | Edlerid | 8001-130 | | Edlerid | 8001-050 | Edlerid | 8001-050 | Edlerid | 8001-025 | |
| 2 | Edlerid | | | Edlerid | | Edlerid | | | | |
| 3 | Edlerid | | | Edlerid | | Edlerid | | | | |
| 4 | Edlerid | Edlerid | | Edlerid | | | | | | |
| 5 | Edlerid | 8001-090 | | Edlerid | | | Edlerid | | | |
| 6 | Edlerid | | | Edlerid | | | Edlerid | | | |
| 7 | Edlerid | | | Edlerid | | | Edlerid | | | |
| 8 | Edlerid | 8001-070 | | Edlerid | | Edlerid | Edlerid | Edlerid | | |
| 9 | Edlerid | | Edlerid | Edlerid | Edlerid | | | | | |
| 10 | Edlerid | | Edlerid | Edlerid | Edlerid | | | | | |
| 11 | Edlerid | | Edlerid | Edlerid | Edlerid | | | | | |
| 12 | Edlerid | | Edlerid | Edlerid | Edlerid | | | | | |
| Middle | | | | | | | | | | |
| | A | | | B | | | | BR L/Middle | | |
| 1 | Edlerid | 8001-190 | | Edlerid | 8001-070 | | | Edlerid | 8001-050 | |
| 2 | Edlerid | | | Edlerid | | | | Edlerid | | |
| 3 | Edlerid | | | Edlerid | | | | Edlerid | | |
| 4 | Edlerid | | | Edlerid | | | | Edlerid | | |
| 5 | Edlerid | 8001-090 | | Edlerid | | | Edlerid | | | |
| 6 | Edlerid | 8001-090 | | Edlerid | Edlerid | | | | | |
| 7 | Edlerid | 8001-025 | | Edlerid | 8001-025 | | | | | |
| Main | | | | | | | | | | |
| | A | | | B | | | | BR H/Main | | |
| 1 | Edlerid | 8001-340 | | Edlerid | 8001-190 | | | Edelrid | 8001-090 | |
| 2 | Edlerid | | | Edlerid | 8001-190 | | | BR L/Main | | |
| 3 | Edlerid | 8001-190 | | Edlerid | 8001-090 | | | GIN | TGL220 | |
| STB H/Main | Edelrid | 8001-070 | | | | | | | | |
| STB L/Main | Liros | PPSL-065 | | | | | | | | |

Measurement Report Template

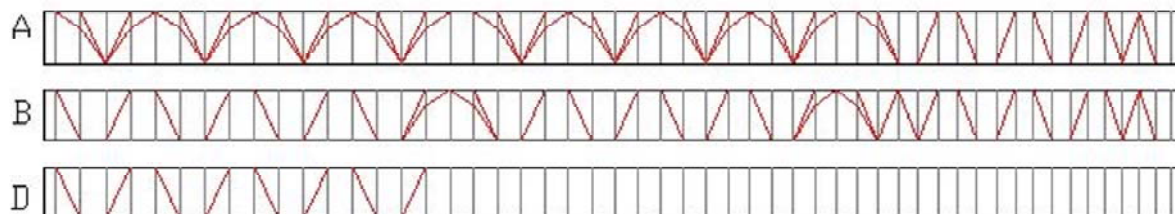
CIVL CCC 2020 (Version 1.0)

Drawings and pictures

Diagonals, Hstraps and Mini Ribs (bottom view)



Diagonals (Front view)



Vent (Inlet) shape

